



Precision Industrial Laser Alignment Systems



KOHECT New QB701 Series – An Entry Level Wireless Color Precision Laser Shaft Alignment Tool

Laser alignment delivers peak performance and value

This entry system has been especially design to saves the user the arduous task of using dial gauges. It is a entry, convenient, cost effective tool runs on wireless and line sensors to brings laser shaft alignment straight to the user’s fingertips.

It practical built-in feature the motor-pump alignment to a new level of simplicity.



KOHECT Avv-711 Series Wireless Color Precision Laser Shaft Alignment System

**More benefit, more value for the key to greater MTBR!
And why pay more!**

KOHECT offer a wide range of precision alignment systems and services for well aligned machines and shafts at your comfortable budget with NO compromise in accuracy and ease of use. Machines that are well aligned at the commissioning stage and thereafter regularly maintained will permanently reduce both plant operating and maintenance costs.

- Increased machine uptime
- Reduced vibration
- Reduced energy consumption
- Increased product quality
- No unplanned shutdown



The latest AVV-711 wireless color laser shaft alignment system ensure Precise, Fast and Intuitive user interface for wide range of shaft application. The design has met both customer operation requirements with greatest convenience and low investment cost for quick pays off.

Avv-711Pro Advance Laser Geometry Alignment come with Wireless Bluetooth convenient of up to 100m range

Professional Avv70Pro/ Avv711 laser geometry alignment partner has been developed and proven by our team of experience field specialist to offer user with all industrial alignment application like shaft, flatness, straightness, engine pocket centerline and squareness measurement requirement.



It is precision laser shaft and geometry alignment deliver affordable, highly accurate and have related Conspect software via USB to PC that make measurement data report traceable in database and simple interpretation on results. AVV-701Pro family ensures user NO LONGER need to pay for high price on expensive brand like the past.



+65 97388913



www.metzin.com

Precision Industrial Laser Alignment Systems

Seiffert Industrial – New Laser Pulley Pro KX-3500 Green laser and Electronic Belt Tension Pro Perfect alignment for pulleys belt alignment

Laser pulley alignment system is a lightweight, compact and durable device with magnetically attaches to the inside or outside face of any pulley or sprocket and has no small parts to get lost. The **new Green Pro KX-3500 work x10 times visible** even under the bright sunlight for outdoor. By using proven **reflected beam technology** for maximum angular resolution and thus provide the most reliable and accurate readings that no other method or tool can match.

Belt Tension Pro... fast, secure and accurate belt tensioning! The lifetime of belt drives is mainly belt alignment, belting tensioning and speed.



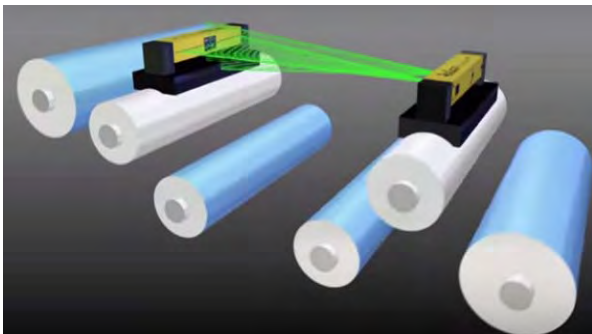
Latest KX-3500 Pulley Pro



Laser RollCheck SX-5150/ SX-4100 with Patented Reflected Laser Beam Technology from USA

RollCheck® Green takes advantage of green laser technology and is 10 times brighter than alignment systems that use standard red laser. It provide the quick replace rolls in the processing plant with quick alignment checks.

Patented reflected beam technology provides an effective, fast and simple way to measure and correct vertical angle (pitch) and horizontal angle (parallelism) between the rolls.



Stainless Steel Alignment Pre-cut Shims Machinery alignment timesavers

Precut shim is justified when machine alignment time, safety and accuracy are at a premium. The stainless steel full hard material protected against rust and deformation. All shims are machine cut, marked with thickness, size and come in a durable storage carrying case with size divider kits. The eight most common use thicknesses plus 6mm and customize size allow all possible alignment application.



RotaChock® for all rotating machines

Variable chock shim is the latest development for industries where its design puts this chock miles ahead of the field.

- Reduce Installation Time
- Avoid Trial and Error
- Wider Adjustment Range
- Self-leveling
- Re-usable throughout machine life cycle
- No soft foot



World Class Approved



Email: info@metzin.com • markng@metzin.com • dale@metzin.com • metzinsingapore@gmail.com

METZIN Technologies & Consulting Pte Ltd: No.7 Tech Park Crescent, Singapore 638125 Tel: +65 9738 8913 ; 9231 1786 ; 6898 0857

Condition Monitoring - Vibration

KOHECT Advance C911T / C911-SA Dual Channel Data Collector, Signal Analyzer, Bearing Tester, Temperature & Optional of Balancing and Shaft Alignment

The C911 series offers a high performance 6400 lines, extra power and convenience of two-channel FFT data measurement and signal analysis. It can be used in almost every industrial maintenance for quick monitoring, bearing condition check and FFT signal diagnosis of machine condition. It also allows option of dynamic imbalance machine correction up to 8-planes mode. The analyzer is compact and weight only around 800g with IP 65 rugged housing design to withstand for harsh field environment.



The *add-on laser alignment capability* delivers a premium return on investment for C911-SA.

KOHECT 107Bi - Compact FFT Vibrometer (5-in-1) for FFT Spectrum, Bearing condition Diagnostic, Temperature, Speed with "Patented" Conspect PC database Software

The most compact and robust Vibrometer that provide FFT spectrum in logarithmic/linear view, and overall ISO 10816 vibration measurement reference: Measure Acceleration, Velocity and Displacement machinery vibration with option of bearing shock pulse condition & IR temperature. Measurement are allow saving of hundred of data, upload via USB to PC for data management and print report on **Conspect software**.



Hansford Vibration Multi-meter Kit & Vibration Sensors

The HS-630 Vibration Meter Kit is a reliable and easy to use hand-held machine condition inspection instrument.

Hansford product range includes vibration and velocity sensors or industrial accelerometers with either AC outputs for use with data collectors, or 4-20mA outputs for direct use with PLCs for monitoring vibration levels of plant machinery in a predictive maintenance role. **Intrinsically safe** versions are also available with **ATEX and IEC Ex certification** for approved use in Group I (Mining) and Group II (Petrochemical).



Hansford Vibration On-line Monitoring Protection System

Apart from sensor, custom-built vibration protection system with sensors and multi-sensor switch boxes, vibration sensor modules, stud mount and cable accessories for sensors are also available to meet user requirement.





+65 97388913



www.metzin.com

Field Inspection and Testing

SAVING ENERGY COST!

Latest LEAKSHOOTER LKS1000 V2 from France shows the real time on a visible scene the location of gas/air leaks with visual dynamic real time target guide & severity color code. *Just Aim, Shoot, Measure and Record*

The dynamic target will change in size and colour according to the severity of the leak from yellow to red dB RMS and MAX values are continuously measured and displayed on a color and digital bar graph. LKS1000 allows the user to quickly and accurately determine leaks in most industrial leak application to save total operating cost.



Electric PdM with Motor Winding Analyzer & Power Quality by Current Signature

Latest ALL-Test Pro 5 offers electric predictive maintenance for motor health analysis

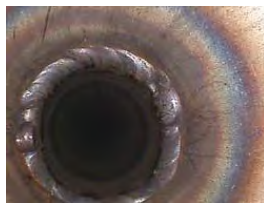
ATPro IV Pro/ ATPro 33IND / latest ATPro 5 analyzer are all-in-one electrical predictive instrument that performs a series of impedance-based tests, (phase angle, impedance, and a current / frequency ratio) on each winding. These measurements and their balance across the three phases provide a clear picture of the condition of the motor winding and instantly indicate the presence of a fault, even at its earliest stages. The tests are performed with non-disruptive low voltages to identify or eliminate -Turn, coil, and phase shorts, broken rotor bars, winding contamination, poor connections, phase imbalances when you troubleshoot with our motor winding analyzer.



15KV HV Probe

Portable Industrial Video Borescope MVB-XV and MVB Pro series with 2/ 4ways Articulate Insertion Probe with IP 65 design offer all industrial inspection

The large LCD XV display video Borescope with anti-glare and flexible articulate allow video/image capture by operators any inspection area. Image can be view clearly using zoomed up & mirror, rotate and comparison within the large display.



MVB borescope is equipped with a powerful LED light or InfraRed source; dia. range of Ø3.9mm, Ø5.5mm, Ø6mm, Ø8 mm, Ø25mm insertion probe to perform all types of remote visual inspections with inter-changeable probes that allow access to nearly any area. Interchangeable probe of working length available: 1m, 2m, 3m, 5m, 10m, 20m or even 30m.



+65 97388913



www.metzin.com

Field Inspection and Testing

Digital Crank Shaft Deflection Indicator and Ovality Measurement

Most engineers are familiar with the importance of regular checks on diesel engine crankshafts and cylinder liner. With an electronic Deflection Indicator MDI series, measurement task become easier and greater accuracy of 0.001mm. As an option, it can be connected to ovality kit to check the cylinder liner ovality and wear comparison. PC software allows data evaluate and report.



Digital Belt Tension Pro by Laser

Optimal belt tension guarantees maximum lifetime.

For all belt drives

- ✓ Bright, visible laser beam
- ✓ Belt force in N / Vibration in Hz
- ✓ Clear color coded (green-yellow-red) graphs
- ✓ Backlight display
- ✓ Definable measurement rounds
- ✓ Built-in sensor test with feedback
- ✓ Outstandingly cost-effective



New Stroboscope - Inspect and observe potential rotating machine fault with confidence

The MLS-40EX compact LED Stroboscope is a rugged, light weight device that provides a super bright LED, uniform light output for performing visual diagnostic inspection and RPM measurements. It is a simple digital operate handheld, just point and shoot with flash rates 60-21000 RPM.

Stroboscopes are commonly used to examine moving machinery in an industrial setting. The stroboscope allows the equipment to be inspected or monitored, diagnose parasitic oscillations, slippage, or unwanted distortions while it is operating.



Intrinsically Safe Stroboscope (EX Zone I & 2I)

Ultrasonic Thickness Gauge (Intrinsically Safe Ver.)

TT-series and new IS version ultrasonic gauges measured 0.75mm up to 300mm thickness materials thickness with quick, ease and accurate readings.



Bearing Induction Heating for modern workshop - Faster, easier and safer way to shrink fitting

Induction heater by Eddy current principle is the superior method of expanding bearings, gears, sprockets, couplings and sleeves, avoid damaged of parts that due to overheating. For placement on shafts, it is the safest, quickest, most economical method of applying heat.



Leica Latest DISTO™ DXT

Tough enough, IP 65? The latest smallest laser distance meter

The smallest to the tough DISTO - DXT is built with IP67 industrial protection standard against water, dust and 2m drop proof. This innovative hand-held laser meter from the inventor offer Simple, Quick and Accurate distance measurements for all industrial users. Swiss technology assures Safe & Reliable field measurement with affordable modern meter.



Professional Industrial Training & Field Services

We provide Smart Solutions to Maintenance, Reliability and Engineering!

Beside maintenance products consulting, we are also providing in-house training course on laser alignment and condition monitoring, in-situ mechanical industrial services consulting and maintenance contract to improve your machinery performance.

